



Innovation. Experience. Strength.

MIX

Feeding equipment

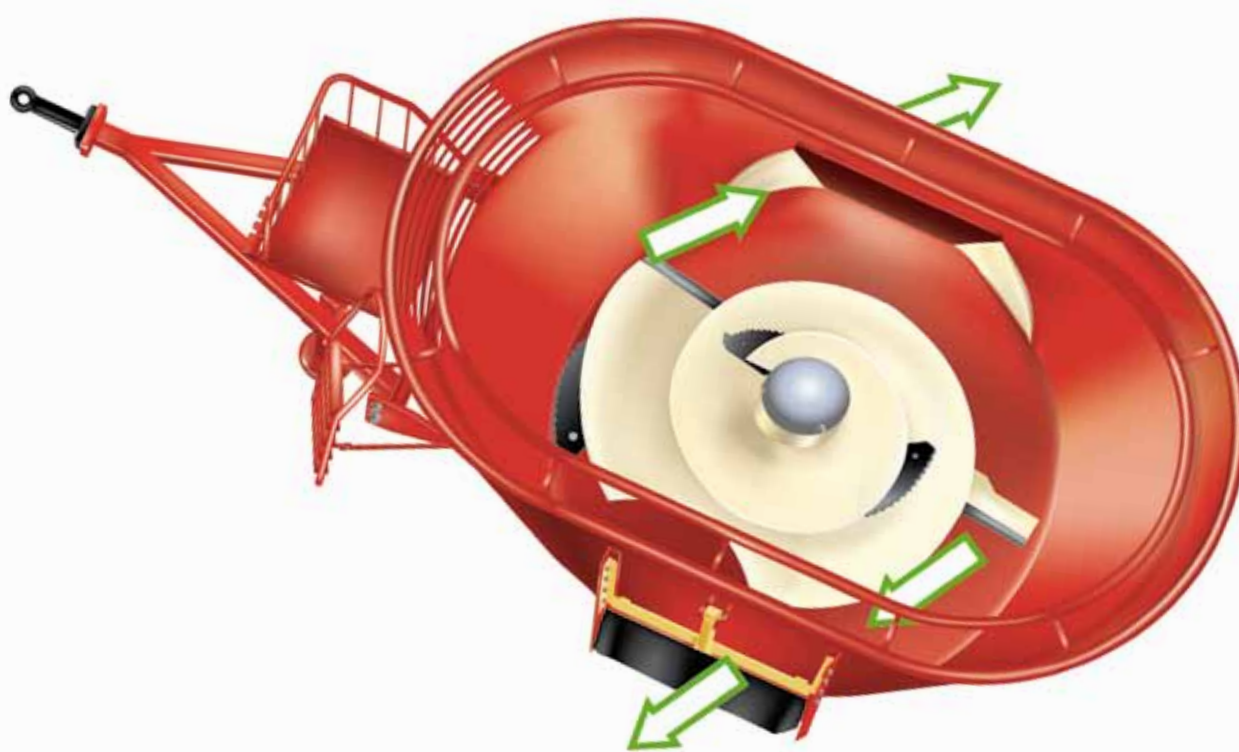




The patented EDS system feeds precisely

Faster and more consistent discharge – right where you want it

The patented EDS system (Exact Dosing System) provides a fast and consistent discharge. Ensuring that the fodder comes out at the widest point on the side of the mixer wagon and is deposited in a loose swathe, the asymmetrical arrangement of the side doors prevents you from driving over the fodder.



Consistent discharge – even without a conveyor belt

The patented EDS system provides an extremely consistent fodder discharge – even without a conveyor belt. The doors are arranged so that they are positioned asymmetrically to the center of the hopper. As a result, the fodder comes out of the mixer wagon tangentially, and the fodder flow is not interrupted. With the side doors on the right and left, the fodder can be discharged simultaneously on both sides. This enables a fast and reliable discharge. The patented rubber covers of the EDS doors minimize the risk of injury for both people and animals.

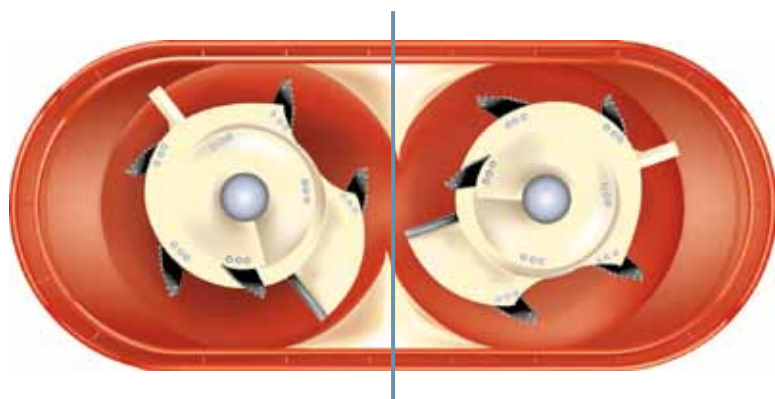


The mixing hopper

A structure-preserving and homogeneous mixing



Optimized mixing process



Excellent mixing thanks to asymmetrical position of the mixing wedges

The mixing process

We customize the mixing augers for every mixing hopper. This ensures that the mixing process in every vertical BvL mixer wagon is performed with utmost proficiency and energy efficiency. The result is a mixture that is homogeneous and characterized by a multitude of different structures.

Benefits of asymmetrically positioned mixing wedges

The asymmetrically arranged mixing wedges in the mixing hopper of mixer wagons that are equipped with two or three mixing augers provide for an ideal exchange of fodder between the individual mixing chambers. This arrangement of the mixing wedges combines an optimized flow of material with a high degree of volume utilization and a lower power requirement.

- Optimum flow of material
- High volume utilization
- Low power requirement

Robust and sturdy:

One example of the sturdiness of the BvL fodder mixer wagons is the welded-on heavy-duty anti-overflow ring – a standard feature on every mixer! The double-tubular construction made of 4 mm thick walled tubing and 12 mm thick, welded-on carrier bars as the connection between the inner and outer rings assures an extremely solid construction of the hopper and prevents an overflow of the fodder. We also recommend that you select our Vario ring - as a special solution - for the processing of long-fiber round bales.

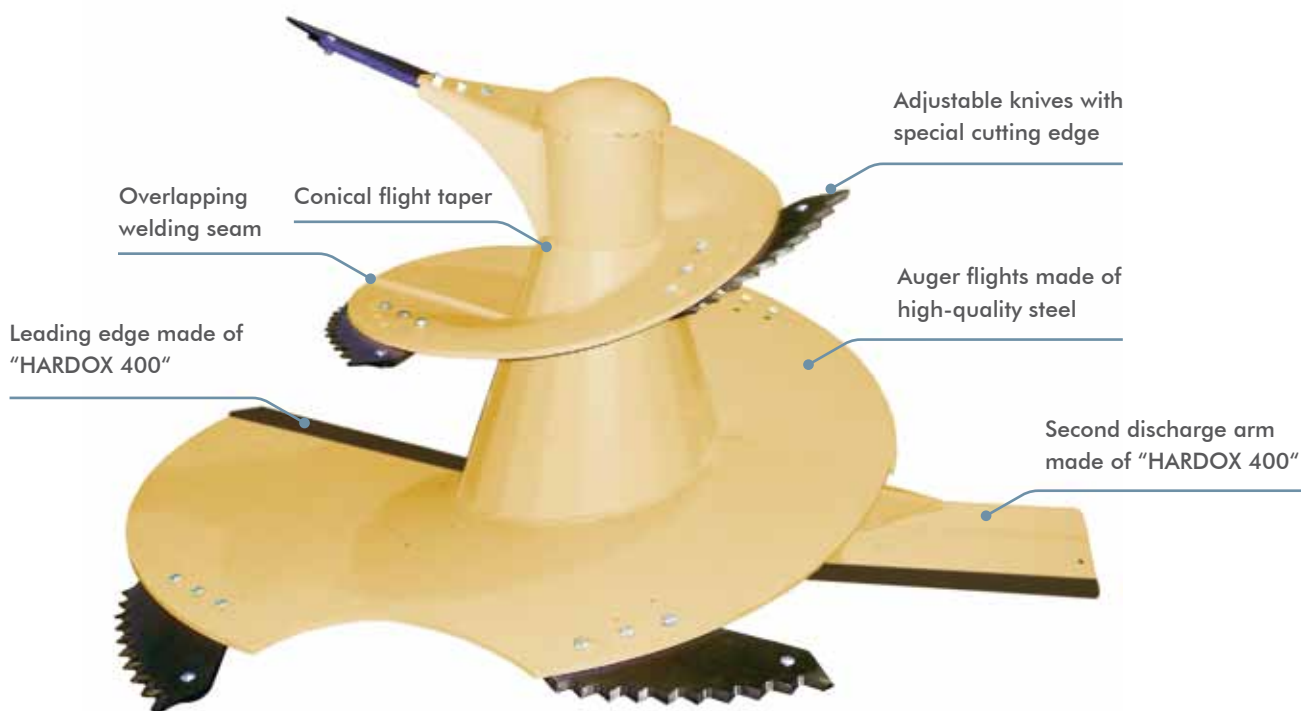


The power mixing auger

Always the right type

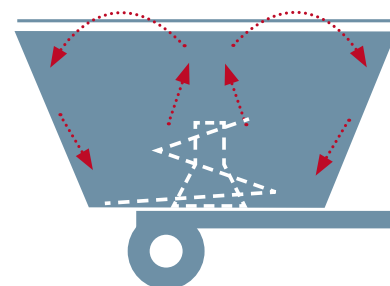
Our sturdy power mixing auger is the product of 30 years of experience. We use only the premium quality, highly wear-resistant "HARDOX 400" special-purpose steel for the production of the leading edges.

Always perfectly adapted to the contour of the hopper, the conical and slender shape of the auger guarantees high volume utilization as well as an extremely easy mixing process that is gentle on the fiber. The opening of entire round and square bales poses no problem at all. The power mixing auger can be optimally adapted to various fodder types by adjusting its knives.



High volume utilization

As the mixing auger is perfectly adjusted to the mixing hopper, BvL is able to guarantee an outstanding degree of volume utilization. The mixing auger is as small as possible, but as large as necessary. This design makes it possible to utilize the full volume of the mixer wagon without the need to cut back on the required quality of the mixture. This helps save time and money.





V-MIX Agilo

Single-auger mixer



3.5 to 5 m³ – Five stars for the smallest model

Offering capacities between 3.5 m³ and 5.0 m³, the V-MIX Agilo is small and exceptionally agile. "Nothing is impossible" is the motto of the smallest, yet fully capable mixer wagon, which fits in any building and can handle any amount of work for you.



The discharge options

The unique axle arrangement under the mixing hopper allows the V-MIX Agilo to be fitted for different discharge options. It can even be equipped with a cross conveyor at its rear.



EDS discharge at the front right



EDS discharge at the front right and the rear left



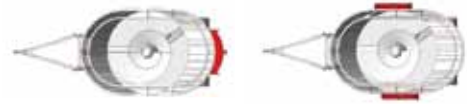
Cross conveyor in the rear

V-MIX Plus T

Single-auger mixer

6.5 to 13 m³ – The lowest in its class

The mixing hopper is positioned between the axle and the drawbar. The V-MIX Plus T is distinguished by an extremely low overall height (starting at 1.96 m) and is especially well suited for low door entries. This V-MIX Plus T also shows its advantages when used in combination with loading vehicles that have a low loading height. A low loading height saves time and makes the loading process easier.



The discharge options

The different arrangement options for the discharge openings allow you to customize the V-MIX Plus T to the requirements of your particular farm. Whether you need discharge to take place at the right, left or center rear – nothing is impossible.



EDS discharge on the left



EDS discharge on the right and the left



EDS discharge at the center rear

V-MIX Plus

Single-auger mixer



6.5 to 15 m³ – The mixer wagon used by professionals

The single-auger mixer wagon is available in sizes from 6.5 to 15 m³. Its "modular design" allows you to create a mixer wagon with perfect ease until you find the one that fits the needs of your agricultural enterprise best.



The discharge options

The V-MIX Plus shines with its plethora of discharge options. All available options can be tailored precisely to your requirements. We can implement discharge openings on the side, on the rear

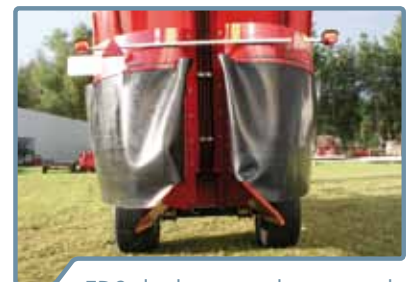
corners or at the center rear and even cross conveyors of different widths at the rear and the front. We can, of course, also provide you with the accessories that match the discharge option you selected.



Lateral EDS discharge on the right and the left



EDS discharge at the center rear



EDS discharge at the rear right and on the left on the corners



Cross conveyor in the rear



Cross conveyor in the front



Folding elevator

V-MIX Plus

Two-auger mixer



13 to 30 m³ – The compact two-auger mixers

The two-auger mixers with 13, 15, 17 and 20 m³ are very compact and narrow mixer wagons. That way, large quantities can also be delivered in narrow feed passages. Offering exceptional volume utilization and the capacity to mix and transport large amounts of fodder, our larger two-auger mixers certainly rank among our other products that qualify as large-volume wonders.



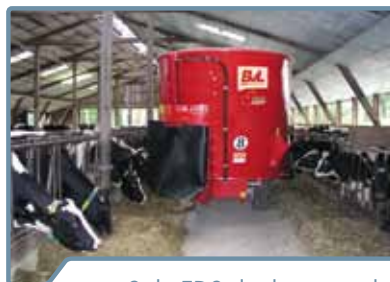
The discharge options

Our two-auger mixers included in the V-MIX Plus series offer every farmer a host of different options when it comes to dispensing fodder. Side discharge openings as well as openings at the rear center or on the rear corners of the mixing hopper are possible. We also offer

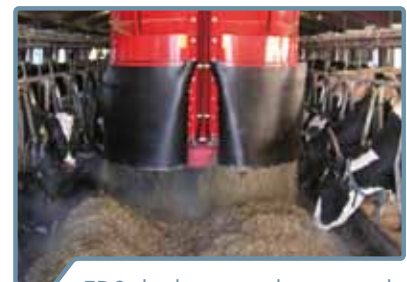
cross conveyors of different lengths that are suitable for front and rear installation. We can, of course, also provide you with additional accessories that match the discharge option you selected.



Side discharge opening at the front and the rear



Side EDS discharge at the right and rear left



EDS discharge at the rear right and on the left on the corners



Cross conveyor in the rear



Cross conveyor in the front



Folding elevator at the rear

V-MIX Plus

Triple-auger mixer



25 to 40 m³ – Mixing in large format

... if you need to mix even larger quantities, BvL recommends the use of their triple auger equipment. Even with its 30 m³ capacity, these mixer wagons can negotiate feed passages with a clearance of only 2.85 m. The V-MIX Plus 3S offers the same advantages as its smaller siblings. The V-MIX Plus 3S is available in sizes from 25 to 40 m³.



The discharge options

Thanks to the large variety of discharge openings they offer, our triple auger mixers can be perfectly adjusted to the specific requirements existing on your farm. This extensive range of mixer wagons can be equipped with all sorts of lateral discharge openings and

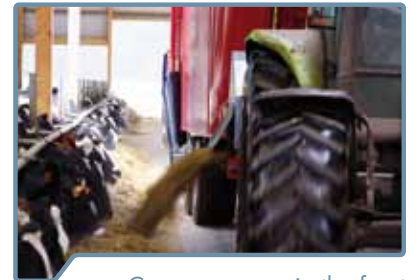
cross conveyors (depending on the type of the mixer wagon). What is more, every discharge can be fitted with additional options to make the machine even better suited for use under the specific conditions present on the farm.



Side discharge opening at the front and the rear



Discharge at the center rear



Cross conveyor in the front

The BvL Powershift gearbox: Effortless shifting under load

BvL's Powershift gearbox is a reduction gear with integral hydraulic clutch. This gearbox allows you to drive up to the mixer wagon in low gear and rev up to full mixing speed under load. This reduces the power required for the approach to the mixer wagon significantly and eases the load on the entire drive train – from the tractor to the mixing auger – to a tremendous degree. The Powershift gearbox is a particularly useful and economical addition to your mixer wagon if you need to mix large quantities of fodder. This gearbox is available as optional equipment for products of the V-MIX Plus series. The gearbox comes standard with all mixer wagons included in the V-MIX Giant series. The V-MIX Giant series is available in sizes from 40 to 46 m³.







V-MIX Fill

Everything in just one machine

The L and LS models of the V-MIX Fill series feature, respectively, a loading scoop for filling the mixer wagon and an integrated cutting unit. The proven BvL cutting unit cuts through any type of silage with perfect ease. Its active knife system allows the machine to cut silage slices of up to 40 cm out of the silage face, leaving behind a smooth and clean surface. The mechanism driving the knives is protected and provides for a powerful feed rate.

All benefits at a glance:

- Smooth and clean silage clamp face
- Silage storage density is maintained with no penetration of air
- Acceptance of fodder components without losses
- Four work steps in one machine: Removal, loading, mixing, feeding
- Keep everything safely in view with the rear view safety camera system



BvL's automatic lowering unit

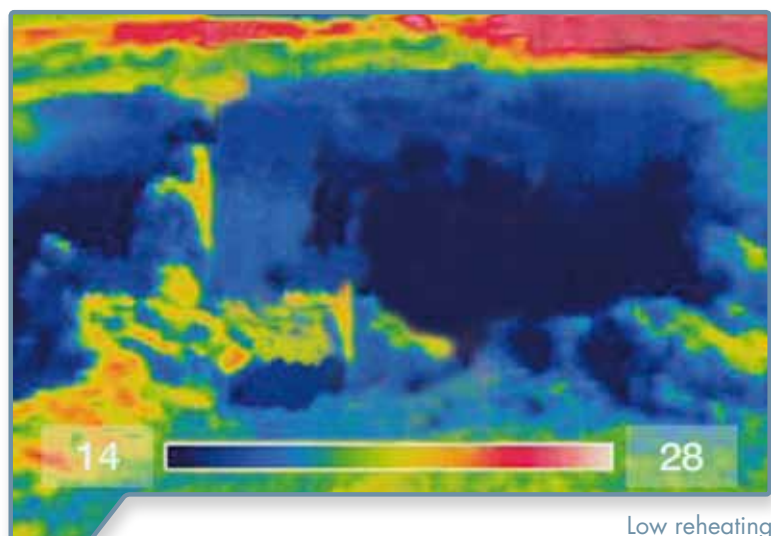
The automatic lowering unit built into the V-MIX Fill LS allows for effortless cutting that requires only minimum pressure. If the lowering pressure of the cutting unit exceeds permissible levels, the hydraulic power is distributed to the knife drive mechanism, keeping the rate of cutting within the optimum range. This eases the load on the cutting unit and helps extend its service life. This feature also prevents the cutting unit from jamming while performing the cut.



Automatic lowering unit

Less reheating as storage density is preserved

Oxygen penetrating the deeper layers of the silage may cause the silage to mold and result in undesirable reheating. Leaving the silage completely undisturbed while completing its cut, the cutting unit of the V-MIX Fill LS leaves behind a cutting surface that is perfectly clean and smooth. This reliably keeps oxygen from penetrating and preserves the quality of the silage.



Low reheating

Four work steps in one self-loader

Self-loading

Four work steps in only one machine: Removal, loading, mixing, and feeding. The V-MIX Fill LS affords you the luxury of extra ease of use and reduced working hours.

Save an entire loading vehicle

As the self-loader is equipped with its own cutting unit and can load itself, there is no need for you to use a separate loading vehicle. This saves time, manpower and, first and foremost, money.



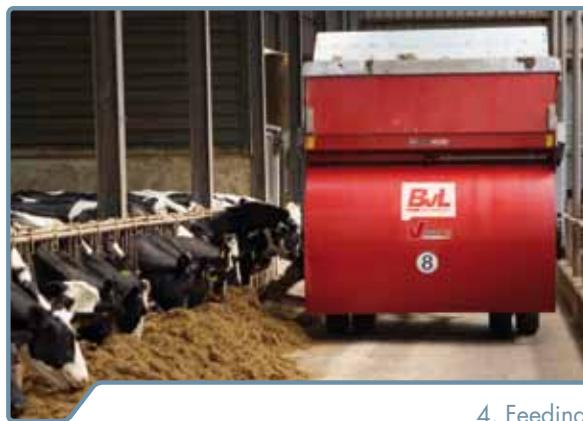
1. Removal



2. Loading



3. Mixing



4. Feeding

V-MIX Fill – also available for loading only

The self-loader made by BVL is also available as a loading-only model – the V-MIX Fill Plus L. This machine comes with a loading scoop without cutting unit which allows the operator to conveniently and easily load the mixer wagons with round bales, silage blocks and other components. The V-MIX Fill makes it possible to open and mix entire bales or blocks without a hitch.



Reliability and ease of use

Keep a firm eye on any situation thanks to BvL's camera systems

Monitoring the cutting process (standard equipment)

Monitoring the mixing process

Monitoring the discharge process

Rear view safety camera system (standard equipment)



Monitoring reverse travel



Monitoring the cutting process



Monitoring the mixing process



Monitoring the feeding process

The camera



V-MIX Fill Plus LS

Single-auger mixer



8 to 13 m³ – The compact all-in-one solution

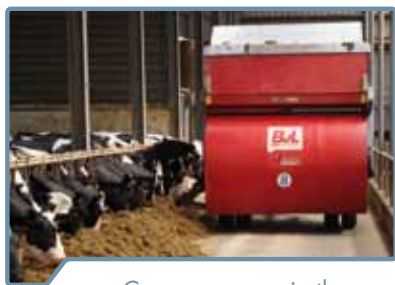
The single-auger mixers that are part of BvL's range of self-loading feeding equipment are available in sizes from 8 to 13 m³. The built-in cutting unit and the add-on loading scoop make it possible to load, mix and discharge the fodder with just one machine.



The discharge options

Our self-loaders with single auger can be equipped with a cross conveyor at the rear or at the front. When installed at the rear, a cross conveyor is ideally suited for buildings with dead end passag-

es as it allows the operator to discharge the fodder at the rearmost position of the mixer wagon.



Cross conveyor in the rear



Cross conveyor in the front



Cross conveyor in the front with folding elevator

V-MIX Fill Plus LS

Two-auger mixer

13 to 24 m³ – The all-rounder amongst mixer wagons

Removal, loading, mixing and feeding – With the V-MIX Fill Plus LS, all work steps can be handled with just one machine. The proven BvL cutting unit provides a perfect, smooth cutting surface which preserves the storage density of the silage. The amount of oxygen penetrating the silage is reduced. Fodder losses from reheating on the silage face and in the silage are minimized.



The discharge options

The two-auger models of our self-loader mixer wagons can be equipped with discharge openings on the side as well as a cross conveyor at the rear or the front. It is also possible to combine these discharge options without a problem.



Cross conveyor in the rear



Cross conveyor in the front

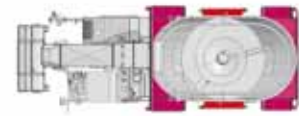


EDS discharge at the front right and the left



V-MIX Drive

Single-auger mixer



Maximus Plus

Available in sizes 11, 13 and 15 m³

The self-propelled V-MIX Drive Maximus Plus mixer wagon is a true technological wonder. Its unique features include a patented profiled roller. The machine is also unbeatable when it comes to combining technical sophistication with ease of use. Other impressive features include the available add-on options, e.g. four-wheel steering. For more information about this machine, please refer to the separate brochure describing our self-propelled mixer wagons.



MIX DRIVE

The discharge options

The discharge options you can choose from for this self-propelled mixer wagon are discharge on the side (left or right) and cross con-

veyor (at the front or the rear). Optionally, both cross conveyors can also slide 30 cm laterally on both sides.



Cross conveyor at the front with side shift (optional)



Lateral discharge on the left/right



Cross conveyor in the rear

What does structure mean?

Structure is essential in order to achieve high capacities in the feeding of dairy cows or fattening bulls. For rumination, structure must be contained in the fodder so that the optimal rumen pH value remains intact.

Additional advantages of an optimal fodder structure:

- The risk of health problems decreases
- Fodder acceptance increases
- Feed conversion increases

The profiled roller

The profiled roller operates with a coarsely toothed profile and combs the fodder from the clamp in a manner which is gentle on the structure. The profiled roller leaves the fodder structure intact and undamaged.



V-MIX Fix Plus

Single and two-auger mixers

6.5 to 24 m³ – Stationary system technology

The field of applications for stationary mixer wagons is wide. They are equally well suited to function as standalone mixing equipment, as mixing systems integrated into larger feeding systems or as systems for other stationary applications. We have the solution that fits your operation best.



The discharge options

Stationary mixers made by BvL can be equipped with a host of different discharge systems. These solutions offer you the option of dispensing the fodder through a discharge opening on the side or of combining it with other systems by means of elevators.



EDS discharge on the side



EDS discharge with folding elevator

Equipment options

possible options include:

- A variety of drive motors
- Soft starter
- Frequency converter

Complete emptying thanks to emptying mode

Emptying the mixer wagon completely at the end of the mixing process requires that the fodder be flung clear off the mixing auger. BvL's optional emptying mode allows you to empty the mixer wagon completely, thereby preparing it for the next load.





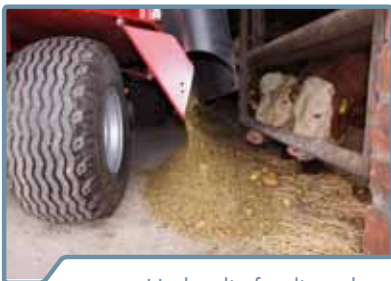
MIX-FIX

Add-ons for the V-MIX

Extensions to create your perfect mixer

The following is a broad overview of accessories you might want to consider for combination with your BvL mixer wagon. This overview, however, provides merely a glimpse of what is possible. If you have a specific option in mind and would like to learn more, please do not hesitate to contact us directly.

Commonly selected accessories for the discharge



Hydraulic feeding chute



folding elevator



Cross conveyor with side shift

Commonly selected accessories for the mixing hopper and the mixing augers



Work platform



Magnet-Plus system



Hydraulic counter knives

Robust conveyor belt for all occasions

All conveyor belts on our BvL mixer wagons consist of double reinforced rubber. These properties fortify our rubber belt against the extreme day-to-day conditions present at any professional agricultural enterprise. The sturdy construction of the conveyor belt and the large deflection rollers that are designed as cage rollers ensure non-slip operation of the conveyor belt. The drive delivers uniform motion and prevents unnecessary wear.





Mineral chute



Molasses filler tube



Vario ring



Vario volume

Other accessories



Camera system with electric control



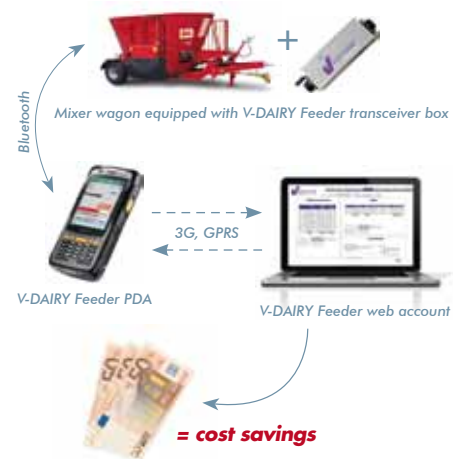
Lighting system with collision protection device

CONNECT

Feeding made easy

Do not feed your profits to your animals!

Feed costs account for more than 50 % of the direct costs of running an agricultural business. Management of this area can be the secret to success or failure in dairy farming. In order to provide the farmer with the most precise possible control over the feeding, BvL offers an intelligent feed management system. Our V-DAIRY Feeder feed management system is a tool that makes documenting and analyzing the daily feeding a breeze. The web-based software can be used to create reports that comprehensively document all feed-related processes for the farmer. Data is exchanged automatically from the feeder wagon to the Internet (cloud solution), and the data is available at any time and from any location.



Electronic control – greater convenience at the push of a button

The user-friendliness of the technology is a major emphasis at BvL. We guarantee the effective use of the machinery through uncomplicated control systems. All BvL mixer wagons can be equipped with a reliable and convenient electronic control. The well-thought-out structure and the sturdy technology make this control extremely reliable.





V-COMFORT Turbo – spread materials with perfect ease

Opt for the V-COMFORT Turbo and expand the capabilities of your original BvL mixer wagon by an additional feature. The straw blower makes it a cinch to spread materials across your freestall buildings. Better still, this solution works equally well on external loader or self-loader mixer wagons. Our V-COMFORT Turbo straw blower is available for both types of mixer wagons.



Straw blower – Spreading made easy

The V-COMFORT Turbo can be combined with (nearly) all V-MIX models – either at the front or the rear. The mixer wagon assures fast processing and spreading of the straw. In the process, the performance and process safety play a decisive role. The internal, patented straw bell, the patented drive and the patented mounting guarantee high-performance spreading. The factors listed below turn the V-COMFORT Turbo into a true all-in-one solution:

- Hydraulically adjustable discharge flap for controlling the throw length
- Hydraulic slewing for control of the ejection direction (right and left)
- Direct attachment: no conveying duct between the mixing hopper and straw blower
- Reliable and powerful mechanical drive
- Can be mounted either at the front or rear



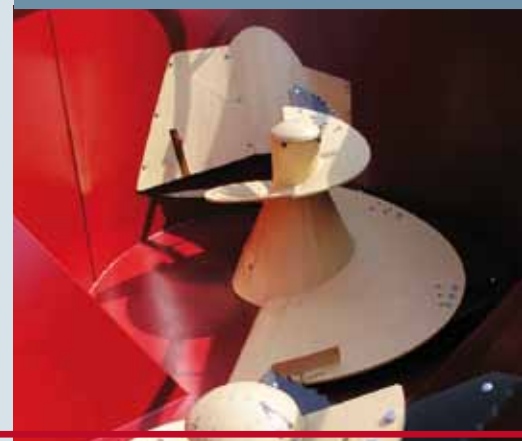
Stone trap Well-thought-out extra

The integrated stone trap provides additional protection of people, animals and equipment. The majority of the field stones baled in the straw can be collected and sorted out there.

The BvL straw bell

For free material flow

The integrated BvL straw bell, combined with the asymmetrically arranged discharge opening for the straw blower, assures an optimal material flow and guarantees the highest delivery rate. The straw bell is very reliable, because clogging in the straw blower is prevented with the controlled delivery quantity.



V-MIX Fill Plus L	Number of cows	Capacity (m ³)	Overall width with one side door (mm)	Overall width with two side doors (mm)	Overall width of mixing hopper (mm)	Overall length (mm) without cross conveyor (with cross conveyor at the front/rear)	Overall height (mm)	Unladen weight (kg)	Max. payload (kg)	Power requirement (with reduction gear) (kW/HP)
8-1S L	44-64	8.1	x	x	2350	5030 (5520/5030)	2810	3680	3360	41/56 (29/40)
10H-1S L	55-80	9.9	x	x	2350	5030 (5520/5030)	2920	3900	4200	50/68 (36/49)
10N-1S L	55-80	10.4	x	x	2650	5130 (5720/5130)	2810	4300	4200	50/68 (36/49)
13-1S L	66-96	13.4	x	x	2650	5130 (5720/5130)	2970	4550	5040	54/73 (35/51)
13-2S L	71-104	13.8	2350	2350	2350	7430 (7690/7430)	2810	5500	5460	59/80 (44/60)
15-2S L	82-120	15.8	2350	2350	2350	7510 (7690/7510)	2810	5900	6300	74/100 (56/76)
17-2S L	93-136	17.9	2350	2350	2350	7570 (7690/7570)	2910	6200	7140	77/105 (59/81)
18-2S L	99-144	17.2	2650	2650	2650	7650 (7890/7650)	2810	7900	7560	81/110 (62/85)
20-2S L	110-160	19.8	2650	2650	2650	7650 (7890/7650)	2810	8300	8400	81/110 (62/85)
24-2S L	132-192	24.9	2650	2650	2650	7650 (7890/7650)	2970	8600	9400	86/116 (66/90)
V-MIX Fill Plus LS	Number of cows	Capacity (m ³)	Overall width with one side door (mm)	Overall width with two side doors (mm)	Overall width of mixing hopper (mm)	Overall length (mm) without cross conveyor (with cross conveyor at the front/rear)	Overall height (mm)	Unladen weight (kg)	Max. payload (kg)	Power requirement (with reduction gear) (kW/HP)
8-1S LS	44-64	8.1	x	x	2350	5030 (5520/5030)	3100	4580	3360	41/56 (29/40)
10H-1S LS	55-80	9.9	x	x	2350	5030 (5520/5030)	3100	4800	4200	50/68 (36/49)
10N-1S LS	55-80	10.4	x	x	2650	5130 (5720/5130)	3100	5300	4200	50/68 (36/49)
13-1S LS	66-96	13.4	x	x	2650	5130 (5720/5130)	3100	5550	4950	54/73 (38/51)
13-2S LS	71-104	13.8	2350	2350	2350	7430 (7690/7430)	3100	6400	5460	66/90 (50/68)
15-2S LS	82-120	15.8	2350	2350	2350	7510 (7690/7510)	3100	7400	6300	74/100 (56/76)
17-2S LS	93-136	17.9	2350	2350	2350	7570 (7690/7570)	3100	7600	7140	81/110 (62/85)
18-2S LS	99-140	17.2	2650	2650	2650	7650 (7890/7650)	3100	7700	7560	81/110 (62/85)
20-2S LS	110-160	19.8	2650	2650	2650	7650 (7890/7650)	3100	9100	8400	86/116 (66/90)
24-2S LS	132-192	24.9	2650	2650	2650	7650 (7890/7650)	3100	9400	8600	88/120 (68/92)
V-MIX Drive Maximus Plus	Number of cows	Capacity (m ³)	Overall width with one side door (mm)	Overall width with two side doors (mm)	Overall width of mixing hopper (mm)	Overall length (mm) (with four-wheel steering)	Overall height (mm) (with four-wheel steering)	Unladen weight (kg)	Perm. total weight for road travel (kg)	outer turn radius with standard equipment (including 4-wheel steering) (m)
11-1S	76-85	11	2500	2600	2400	7740 (on request)	2770 (2950)	10100	16300	6.5 (4.5)
13H-1S	95-107	13	2500	2600	2400	7770 (7725)	3050 (3150)	10200	16300	6.5 (4.5)
13N-1S	82-91	13	2550	2700	2500	7850 (7825)	2770 (2950)	10200	16300	6.5 (4.5)
15-1S	102-112	15	2550	2700	2500	7900 (7850)	3050 (3150)	10300	16300	6.5 (4.5)
V-MIX Fix Plus	Number of cows	Capacity (m ³)	Overall width with one side door (mm)	Overall width with two side doors (mm)	Overall length of mixing hopper (mm)	Overall length of mixing hopper (mm)	Overall height with 600 mm of ground clearance (mm)	Overall height with 700 mm of ground clearance (mm)	gear motor options	
8-1S	44-64	8.1	2200	2400	2000	3000	2420	2520		
9-1S	49-72	8.8	2400	2600	2200	3200	2380	2480	22 kW gear motor (max. payload 2,500 kg)	
10H-1S	55-80	9.9	2200	2400	2000	3200	2720	2820	30 kW gear motor (max. payload 3,500 kg)	
10N-1S	55-80	10.4	2500	2700	2300	3300	2400	2500	37 kW gear motor (max. payload 4,500 kg)	
11-1S	60-88	11	2400	2600	2200	3400	2770	2870		
13-1S	66-96	13	2500	2700	2300	3500	2770	2870		
15-1S	77-112	15	2600	2800	2400	3650	2880	2980		
13-2S	71-104	13.8	2200	2400	2000	4950	2300	2400	37 kW gear motor (max. payload 4,500 kg)	
15-2S	82-120	15.8	2200	2400	2000	5050	2500	2600		
15N-2S	82-120	15.4	2400	2600	2200	5300	2230	2330	45 kW gear motor (max. payload 5,000 kg)	
17-2S	93-136	17.9	2200	2400	2000	5150	2700	2800		
17N-2S	93-136	17.1	2400	2600	2200	5400	2380	2480	55 kW gear motor (max. payload 6,200 kg)	
20-2S	110-160	19.8	2500	2700	2300	5650	2460	2560		
20H-2S	110-160	19.9	2400	2600	2200	5550	2630	2730		
24-2S	132-192	24.9	2500	2700	2300	5800	2770	2870		

x means equipment option not available

The technical data specified assumes a speed of 8 km/h during farmyard travel as well as standard equipment.



Technical data

V-MIX Agilo	Number of cows	Capacity (m ³)	Overall width with one side door (mm)	Overall width with two side doors (mm)	Overall width of mixing hopper (mm)	Overall length (mm) minus cross conveyor (with cross conveyor at the rear)	Overall height (mm)	Un-laden weight (kg)	Max. payload (kg)	Power requirement (kW/HP)
3,5-1S	20-28	3.7	1950	1950	1860	3470 (3670)	1925	1500	1470	30/40
5-1S	22-32	5.1	1950	1950	1860	3560 (3760)	2275	1650	2075	35/47
V-MIX Plus	Number of cows	Capacity (m ³)	Overall width with one side door (mm)	Overall width with two side doors (mm)	Overall width of mixing hopper (mm)	Overall length (mm) without cross conveyor (with cross conveyor at the front/rear)	Overall height (mm)	Un-laden weight (kg)	Max. payload (kg)	Power requirement (with reduction gear) (kW/HP)
6.5-1S	35-52	6.3	2130	2260	2050	4600 (5370/4955)	2420	2750	2730	36/49 (27/37)
8-1S	44-64	8.1	2130	2260	2050	4800 (5450/5030)	2620	2950	3360	41/56 (29/40)
9-1S	49-72	8.8	2390	2485	2270	4850 (5580/4950)	2600	3700	3360	41/56 (29/40)
10H-1S	55-80	9.9	2130	2260	2050	5130 (5550/5030)	2920	3500	4200	50/68 (36/49)
10N-1S	55-80	10.4	2470	2600	2370	5170 (5710/5170)	2600	3800	4200	50/68 (36/49)
11-1S	60-88	11	2390	2485	2270	4930 (5700/5130)	2975	4100	4620	54/73 (38/51)
13-1S	66-96	13	2470	2600	2370	5620 (5850/5620)	2970	4200	5460	54/73 (38/51)
15-1S	77-112	15	2530	2700	2450	5750 (6180/5750)	3080	4450	6050	60/82 (42/57)
13-2S	71-104	13.8	2130	2260	2050	6730 (7380/6730)	2480	4950	5050	59/80 (44/60)
15-2S	82-120	15.8	2130	2260	2050	6810 (7460/6810)	2710	5350	6300	66/90 (50/68)
15N-2S	82-120	15.4	2355	2485	2270	6820 (7580/7045)	2450	6050	6300	66/90 (50/68)
17-2S	93-136	17.9	2130	2260	2050	6890 (7540/6890)	2910	5550	7140	75/100 (56/76)
17N-2S	93-136	17.1	2355	2485	2270	6860 (7620/7045)	2600	6380	7140	75/100 (55/75)
18-2S	99-144	17.2	2470	2600	2370	7300 (7730/7350)	2420	6750	7560	77/105 (59/81)
20-2S	110-160	19.8	2470	2600	2370	7350 (7840/7350)	2610	6900	8400	81/110 (62/85)
20H-2S	110-160	19.9	2355	2485	2270	6930 (7660/7045)	2850	6600	8400	81/110 (62/85)
24-2S	132-192	24.9	2470	2600	2370	7600 (7940/7600)	3000	7200	9632	86/116 (66/90)
27-2S	148-216	27	2470	2600	2370	7650 (8000/7650)	3200	8410	10090	91/124 (70/95)
28-2S	154-224	28.6	2530	2700	2470	7740 (8100/7740)	3220	9350	11760	100/136 (75/102)
30-2S	165-240	30.7	2530	2700	2470	7840 (8180/7840)	3460	9500	12600	110/150 (83/112)
25-3S	137-200	26	2130	2260	2050	9850 (x/9850)	3140	9500	9000	x (80/109)
30-3S	165-240	29.2	2470	2600	2370	9850 (10180/9850)	2850	10800	12600	x (88/120)
36-3S	198-288	36.4	2470	2600	2370	9850 (10330/9850)	3200	11500	15000	x (102/139)
40-3S	220-320	39.3	2470	2600	2370	9850 (10395/9850)	3350	12200	14300	x (114/155)
V-MIX Plus T	Number of cows	Capacity (m ³)	Overall width with one side door (mm)	Overall width with two side doors (mm)	Overall width of mixing hopper (mm)	Overall length (mm) without cross conveyor (with cross conveyor at the front/rear)	Overall height as supplied (mm) *	Un-laden weight (kg)	Max. payload (kg)	Power requirement (with reduction gear) (kW/HP)
6.5-1S T	35-52	6.3	2130	2260	2050	5080 (x/x)	2010	3130	2730	36/49 (27/37)
8-1S T	44-64	8.1	2130	2260	2050	5180 (x/x)	2340	3330	3360	41/56 (29/40)
10H-1S T	55-80	9.9	2130	2260	2050	5300 (x/x)	2640	3750	4200	50/68 (36/49)
10N-1S T	55-80	10.4	2470	2600	2370	5620 (x/x)	2320	4050	4200	50/68 (36/49)
13-1S T	66-96	13.4	2470	2600	2370	5740 (x/x)	2700	4500	5348	54/73 (38/51)
V-MIX Giant	Number of cows	Capacity (m ³)	Overall width with one side door (mm)	Overall width with two side doors (mm)	Overall width of mixing hopper (mm)	Overall length (mm)	Overall height (mm)	Un-laden weight (kg)	Max. payload (kg)	Power requirement (with reduction gear) (kW/HP)
40-3S	220-320	40	2530	2700	2470	10185 (x/x)	3400	13300	16800	129/175
46-3S	247-360	46.6	2530	2700	2470	10215 (x/x)	3755	14000	19000	144/195

x means equipment option not available

* Data refers to the height as supplied (adjustable by +/- 50mm)

The technical data specified assumes a speed of 8 km/h during farmyard travel as well as standard equipment.



Feeding equipment Unloading technology Bedding technology Biogas equipment System technology



The best solution for your farm – for highest yield, a healthy environment, and optimal conditions for your cows: The name **Bernard van Lengerich** has stood for these goals since 1860. You get what you need from us to achieve these goals.

We work with an awareness of quality and value. Extensive experience and first-class, knowledgeable employees are your guarantee that **BvL** is the best choice you can make.



Bernard van Lengerich Maschinenfabrik GmbH & Co. KG

Grenzstraße 16 · 48488 Emsbüren · Germany

Tel.: +49 5903 / 951-0

Fax : +49 5903 / 951-34

E-mail: info@bvl-group.de

www.bvl-group.de

BvL dealers