



AMAZONE

Mounted cultivator ***Cenius***

Trailed cultivator ***Cenius-2TX***



**Welcome to the world of
intensive soil tillage:**

**The Cenius and Cenius-2TX
from AMAZONE**





	Page
1. Machine concept and overview	4 – 5
2. Advantages and features at a glance	6 – 7
3. Layout: C-Mix tines, C-Mix share system, levelling, packer rollers, rear harrow, hitch, running gear, conveyor section	8 – 27
4. Models	30 – 33
5. Optional equipment	34 – 35
6. Technical data	38 – 39

The specialist for intensive loosening and incorporation: the Cenius and Cenius-2TX from AMAZONE

For soil tillage with intensive loosening and incorporation, the Cenius mounted cultivators and Cenius-2TX trailed cultivators from AMAZONE offer great versatility, high levels of reliability and excellent ease of pull for high performance and cost-effectiveness.

Various shares, levelling tools and rear rollers, working depths ranging from 5 to 35 cm, a strong frame and over-dimensioned overload protection of up to 800 kg per tine, as well as excellent low fuel consumption per hectare make this implement the master of flexible soil tillage. With a universal range of applications, from shallow stubble cultivation and intensive incorporation of harvest residues to topsoil deep loosening and seedbed preparation, the implement can be used very flexibly throughout the year.

The Cenius concept

High output soil tillage for mulch sowing



1

1. Versatile attachment options for the Cenius-2TX, suitable for any tractor.

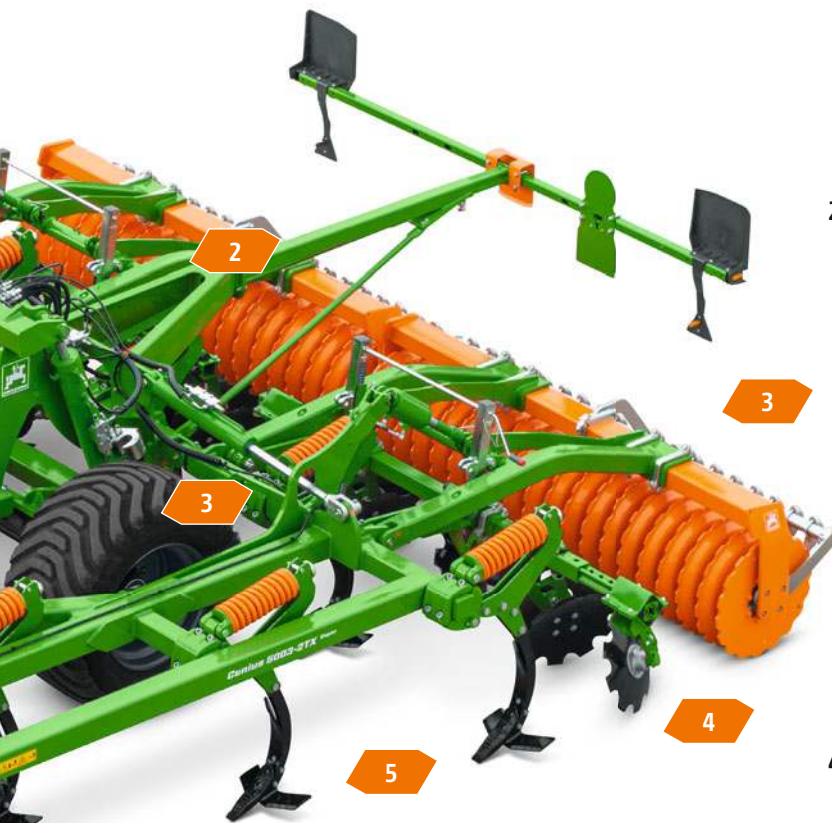
Model overview	Cenius 3000 3500 4000	Cenius 4000-2TX 5000-2TX 6000-2TX 7000-2TX
Working width (m)	3, 3.5 and 4	4–7
Frame execution	mounted, rigid	mounted, folding
Power requirement (hp)	from 150	from 200



Cenius



Cenius 2TX



2. Strong and sturdy frame with a through passage of 80 cm and a tine spacing of 28 cm for blockage-free working.

3. Working depth adjustment is infinitely variable, either mechanically or fully hydraulically with depth control via the rear roller (Cenius) and fully hydraulically with depth control via the rear roller and the support wheels (Cenius-2TX).

4. Perfect profile of work thanks to a wide variety of levelling tools and following rollers.

5. Robust tine element with tine overload protection C-Mix-Special, C-Mix-Super or C-Mix-Ultra with a trigger force of up to 800 kg and a wide variety of interchangeable C-Mix share systems for every application.

Cenius mounted cultivator and Cenius-2TX trailed cultivator



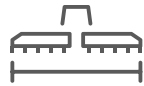
MORE INFORMATION
www.amazone.net/cenius



MORE INFORMATION
www.amazone.net/cenius-2tx



PRODUCT FILM
See more



3 to 7 m



5 to 35 cm



Up to 15 km/h



27 to 31 cm

Pure performance with high speed working

Used for shallow stubble cultivation through to topsoil deep loosening, the Cenius mounted cultivators and Cenius-2TX trailed cultivators are characterised specifically by their robustness and ease of traction. Equipped with the C-Mix share system, every soil is worked to perfection – whether shallow or deep, loosened or incorporated.



OUTPUT

High performance!

Very easy to pull and with fuel savings thanks to the beneficial tine stagger and tine angle of attack.

Soil tillage and sowing of catch crops possible in a single pass with the GreenDrill 501 and FTender.



ROBUSTNESS

Sturdy!

High trigger force of the tine overload protection C-Mix-Special, C-Mix-Super and C-Mix-Ultra for working under the toughest of conditions.

Highly wear-resistant shares in the C-Mix share system for particularly high performance.



COMFORT

User-friendly!

Tool-free, mechanical or hydraulic adjustment of the working depth and the levelling unit is very easy.

The frame, with a height of 80 cm, provides a large clearance and uninterrupted material flow, even with large quantities of straw.

C-Mix tines – the choice is yours

Special, Super or Ultra – the right solution for every task

C-Mix Special tines with shear bolt overload protection

For the Cenius 3003



C-Mix Special tines with shear bolt overload safety protection

- ✔ For operating conditions with infrequent overloading
- ✔ Protects the frame against excessively high forces
- ✔ Must be manually reset after triggering
- ✔ Trigger force 2,500 kg

C-Mix Super tines with pressure spring overload protection

For every Cenius and Cenius-2TX



C-Mix Super tines with pressure spring overload protection

- ✔ For operating in conditions with only an occasional overload
- ✔ Protects the frame against excessively high forces
- ✔ Automatically resets after triggering – high force ensures a reliable reset
- ✔ Trigger force 600 kg for high operational reliability



Cenius 7003-2TX Ultra with C-Mix Ultra tines

C-Mix Ultra tines with hydraulic overload protection

For the Cenius 3003 and 3500 and all Cenius-2TX trailed models



C-Mix Ultra tines with hydraulic overload protection

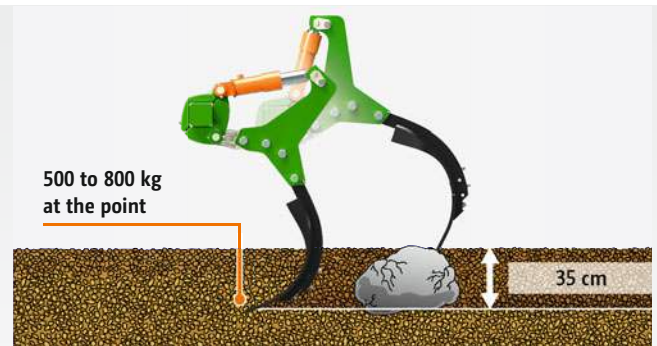
- ✔ For operating in conditions where there is regular triggering
- ✔ Protects the frame against high forces
- ✔ Damped via the hydraulic cylinder when it resets after triggering – less wear in conditions with a high number of trip cycles
- ✔ Infinitely-variable hydraulic adjustment of the trigger force from 500 to 800 kg for maximum operational reliability under all conditions.

Ultra overload for the most strenuous of conditions

The strengths of the C-Mix Ultra tines become particularly apparent in challenging soil conditions where the tine protection system is being regularly triggered, such as in soils with medium to large stones. The trigger force of the hydraulic ultra overload safety protection can be increased infinitely-variably from 500 kg to 800 kg, ensuring that the depth is reliably maintained, even under the toughest of soil conditions. This allows the tines to deflect as often as necessary, even at a working depth of 35 cm. The central hydraulic accumulator ensures that the return travel is damped on the C-Mix Ultra tines. This significantly reduces wear on the overload safety protection.

Stepless adjustment

Stepless adjustment of the system is easily and conveniently carried out from the front on the drawbar. The pressure gauge is also located there and is easily visible from the tractor cab for convenient monitoring.





Strong - right down to the tip

The tines on the Cenius can be fitted with various different shares and share points. Regardless of which variant is used, the high-strength shares and share points ensure perfect penetration into the soil and intensive mixing and loosening.



C-Mix coulter 40 mm with fertiliser supply tines for Cenius-2TX

C-Mix share system with very high mixing intensity

The separation of guide plate from the share point above all serves to reduce wearing metal costs. Depending on soil type, location and soil moisture, 3 to 5 share points can be worn prior to exchanging the guide plate. The guide plates on the C-Mix share system are manufactured with a spiral

design that ensures, in combination with the optimum radius of the share point, perfect deflection of the soil flow and thus a very high mixing intensity with lower power intensity. With the proven C-Mix share system AMAZONE offers a wide range of soil-engaging shares.

The C-Mix share system

Works from shallow to deep and either across the entire surface or in strips

HD pro shares

The 320 mm duck foot share point, the 350 mm wing share, the 80 mm point and the 40 mm share are also available as a hardwearing HD pro version, designed especially for particularly high-usage applications. During the entire lifespan, the length of the share is maintained. This means that no readjustment of the working depth is necessary. Depending on application and soil conditions, the service life is up to five times longer than with the standard points.

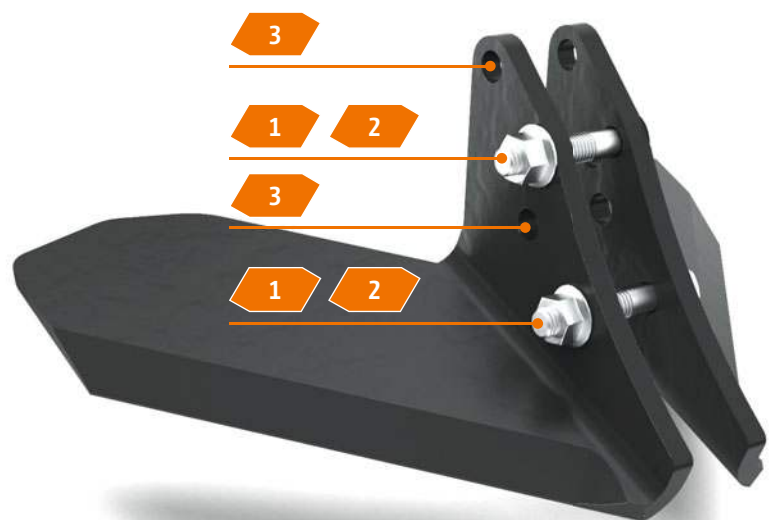
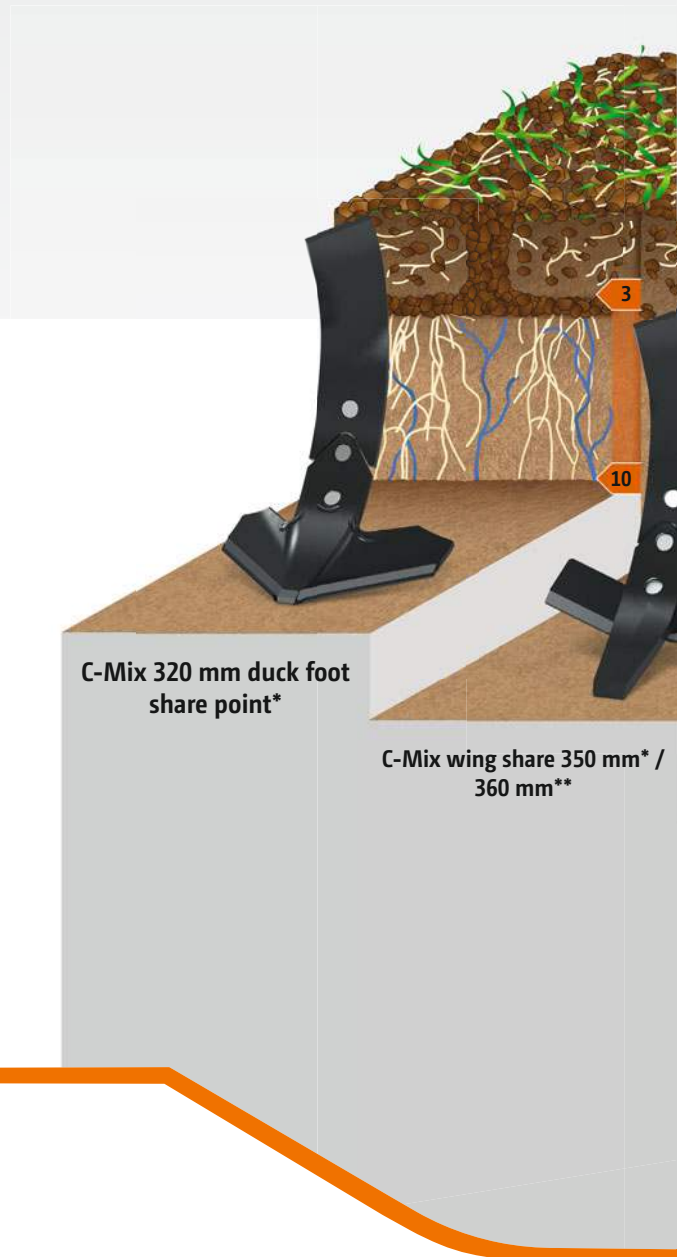


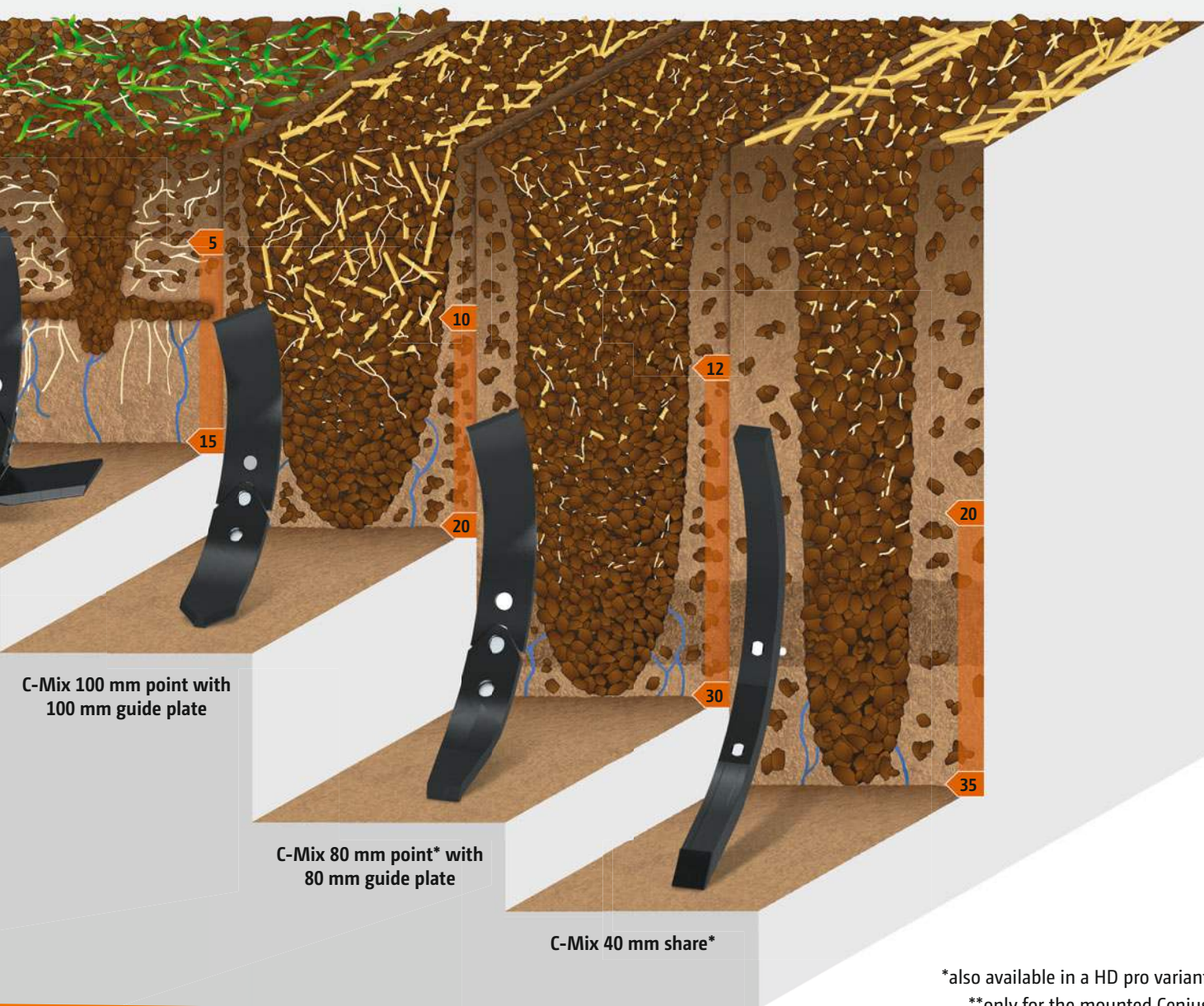
The ultra-shallow cut – with the Cenius* and 360 mm wing share

The 360 mm wing share is suitable for very shallow working. On the mounted models, the wing share can be mounted in 3 different positions to produce different results.

1. for very shallow work with moderate mixing.
2. for good machine penetration with moderate mixing.
3. for optimum machine penetration under extreme conditions and extremely intensive mixing.

* not in conjunction with the Cenius-2TX





The working depths are just a guide and depend on the soil conditions



Optimum incorporation followed by perfect levelling



No matter what kind of soil!

Loosening and mixing

The three-row mounted cultivators and four-row trailed cultivators enable intensive loosening and incorporation of crop residues into the soil. Thanks to the narrow tine spacing of less than 30 cm, the soil is intensively loosened and crumbled. This creates the optimal conditions for mulch sowing. The large frame height of 80 cm ensures high material passage and ensure the highest operational reliability.

Adjustment of working depth

The working depth of the Cenius tine element can be adjusted hydraulically from the cab, enabling part-area-specific working, such as on the headland or when working deeper in the tramlines.

The working depth of the tine element of the Cenius-2TX can be adjusted either mechanically using spindles, or hydraulically from the cab, with great ease.



Mechanical working depth adjustment on the Cenius 03-2TX



Setting scale for the fully hydraulic depth adjustment of the tine element

Large through-passage

The high underframe clearance also provides an undisturbed material flow, even where copious quantities of straw prevail. The following levelling tools evenly level the loosened soil.



Tailored levelling!



❗ "The lasered, semi-circular setting scale for levelling system is great."
(profi Practice test "Trailed cultivators Part 2" · 06/2017)

Levelling and crumbling

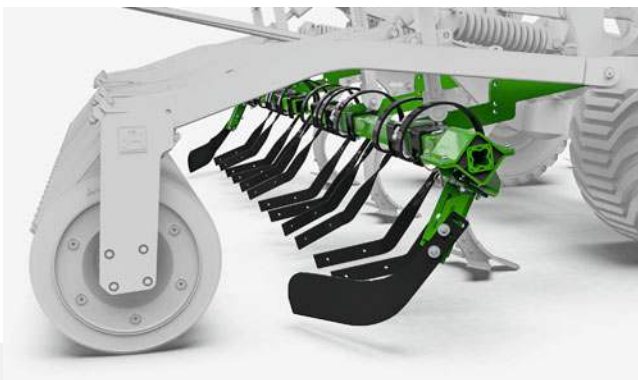
Top-class levelling of the worked soil horizon is the basic requirement for an even reconsolidation. This is why, mounted behind the tine rows, an additional levelling system is attached. Here there is a choice of spring steel closers or serrated levelling discs.

To ensure a tidy matching, the side discs or outer spring steel closers are adjustable in their height and angle.

Spring steel closers

When used on areas with light soil and low straw content, the Genius-2TX can be equipped with the more cost-effective spring steel closers.

These spring steel closers are lighter than the levelling discs and feature a spring steel overload protection. For optimum matching pass to pass, adjustable boundary closers are available.



Spring steel closers

Levelling discs

For use in medium to heavy soils, levelling discs behind the tines are recommended.

The serrated 460 mm diameter levelling discs have a powerful mixing effect and provide a consistent drive, even where there are large amounts of straw.

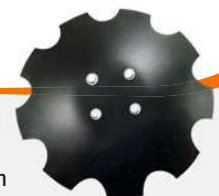
The individual concave discs are mounted via elastic sprung rubber buffer blocks and thus feature a maintenance-free overload safety device.

Easy levelling

On all Genius models, the depth setting of the levelling unit is carried out quickly, safely and without the need for tools using 2 spindles. To further improve the operational performance and the level of comfort, AMAZONE now also offers hydraulic adjustment of the levelling unit. In this way the complete adjustment of the Genius is possible from the tractor cab. The hydraulic adjustment provides maximum comfort and operational safety. Via the clearly visible scale, the current working depth of the levelling discs is visible from the tractor seat so that a simple and quick adjustment on the move is possible.

The position of the trailing discs or the spring levelling tines for crumbling and levelling is adjusted centrally via the setting spindle, again without the use of tools. Adjustable side elements enable the clean matching up to the next bout.

460 mm



No more greasing ever!

Maintenance-free disc bearings

2-row angular contact roller bearing

2 x roller bodies

O-ring

2 x cast rings with face seal

Face seal built into conical seats

Gear oil filled housing

Proven 2,000,000 times over!

No lubrication ever again – thanks to the maintenance-free disc bearings

With no need to lubricate the disc bearings, this results in a significantly reduced overall maintenance time. The face seal has been used in AMAZONE tillage equipment for almost 25 years, and has, over this period, more than proven itself all over the world.

Advantages of the disc element

- ✔ Optimal levelling via spring steel closers or levelling discs, either smooth or serrated
- ✔ Side discs available with individual height and angle adjustment providing a level finish between passes
- ✔ Maintenance-free disc bearings with face seals and life-long lubrication
- ✔ Maintenance-free stone release via rubber sprung elements as standard



Spindles for the central adjustment of the levelling unit on the Cenius-2TX



Hydraulic cylinder for setting the depth of the levelling unit

The roller range – reconsolidation and depth control

A wide variety of following rollers for soil reconsolidation are available for all AMAZONE soil tillage machines.



Description, diameter		Cage roller SW 520 mm				Cage roller SW 600 mm				Tandem roller TW 520/380 mm			
		-	o	+	++	-	o	+	++	-	o	+	++
Soil suitability	Light, sticky soils (peat)												
	Light soils (sand)												
	Medium soils												
	Heavy soils												
	Heavy soils (clay)												
Working quality	Crumbling												
	Reconsolidation												
	Self-driving ability (less slip)												
	Carrying capacity												
	Insensitive to stones												
	Insensitive to sticky soils												
	Little tendency to block												
Weight/m working width		97 kg				114 kg				160 kg			
Rear harrow		optional				optional				-			

Further options

- less suited
o suited

+ well suited
++ very well suited



Roller bearings

All packer rollers on AMAZONE soil tillage machines are equipped with maintenance-free bearings. The bolt-on bearing shafts keep repair work to a minimum in the case of bearing damage. All the mounted models are fitted with standard bearings.



Standard roller bearing

HD roller bearings

The HD roller bearings can be chosen as an option for all mounted, folding implements, and for the trailed TX implements.



HD roller bearing

- ✔ Extreme service life thanks to the metallic face seal
- ✔ Completely maintenance-free with life-long lubrication thanks to the gear oil filling
- ✔ Robust and hard-wearing due to the use of a spherical roller bearing instead of a ball bearing
- ✔ Ideal for high speeds and under stony conditions

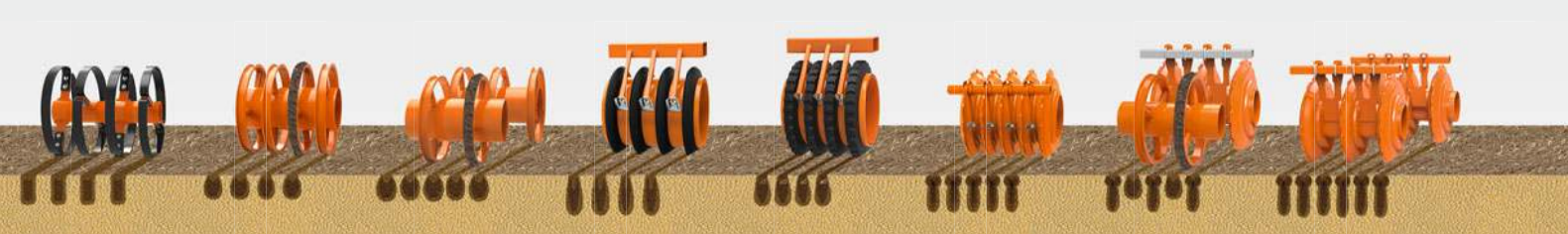


Flex ring roller FW 580 mm	U-profile roller UW 580 mm	Double U-profile roller DUW 580 mm	Wedge ring roller KW 580 mm	Wedge ring roller with matrix tyre profile KWM 600 mm	Disc roller DW 600 mm	DDU Double-disc U-profile roller 600 mm	Double disc roller DDW 600 mm
- ○ + ++	- ○ + ++	- ○ + ++	- ○ + ++	- ○ + ++	- ○ + ++	- ○ + ++	- ○ + ++
116 kg	125 kg	185 kg	175 kg	178 kg	219 kg	255 kg	270 kg
optional	optional	optional	optional	optional	optional	optional	-



Sprung cleaning system

Sprung cleaning system



Combining the rear roller with a harrow

The perfect supplement to seedbed preparation

For seedbed preparation, the AMAZONE cultivators can also be equipped with a following harrow on many of the rollers. The following harrow creates a very fine-crumbled soil

surface structure and thus the perfect germination conditions for the following crops. An additional advantage when using the harrow is the optimised straw distribution.



Harrow system for SW, PW, KW & UW rear rollers



Harrow system for TW & DUW rear rollers



Harrow system for KWM & DW rear rollers



Sprung cleaning system for UW rear rollers

Correctly attached

And for any application

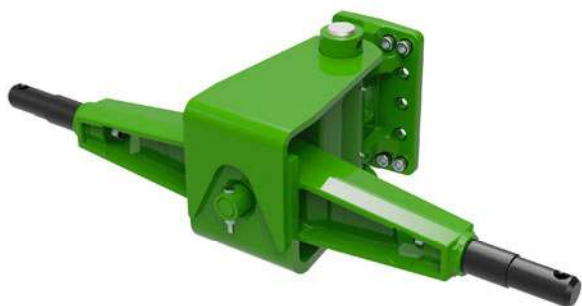


Linkage systems for every tractor

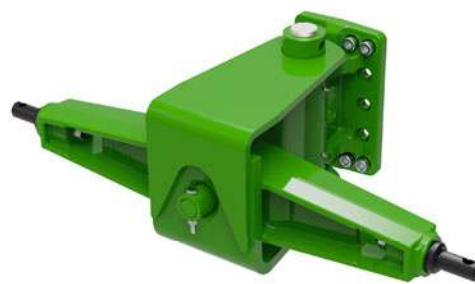
An extensive range of attachment options are available to suit any tractor and for all the cultivators. The flange plate allows the easy and quick mounting of any of the linkage options. In addition, the category of the lower linkage can be quickly changed. Only the linkage pins are interchanged for this purpose. As a result, the appropriate linkage can be selected for any tractor, no matter whether Cat. 3, 3N, 4 or 4N lower link cross shafts, various towing eyes or the K80 ball coupling are used.

Traction control for Cenius-2TX

- ✔ Increase in tractor traction
 - Power transmission from the Cenius to the rear tractor axle
 - Additional weight up to 1,500 kg on the rear axle
- ✔ Reduction in wheel slip
- ✔ Increase in acreage output
- ✔ Reduction in fuel consumption



Lower linkage Cat. 4N



Lower linkage Cat. 3



Towing eye D=46



Towing eye D=79



Ball point coupling M20/K80

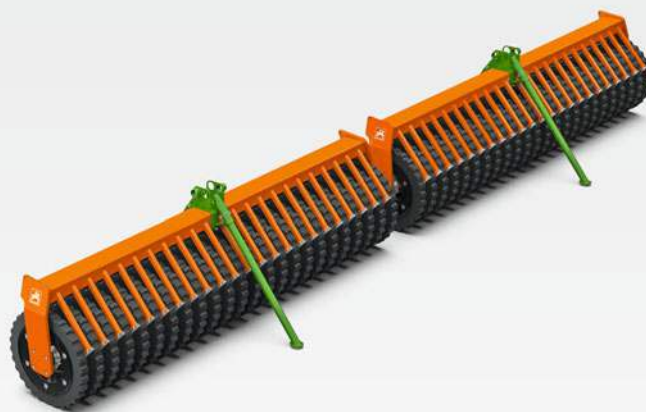
Excellent central running gear for every area of application



Cenius 5003-2TX Super in work with the DUW rear roller



Operating the 6003-2TX Super without the depth roller at the rear



Operational reliability under all circumstances

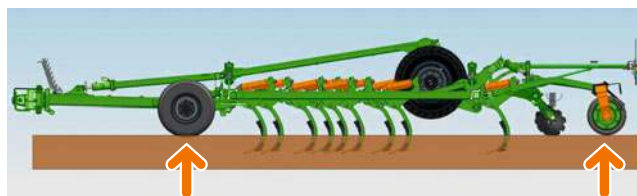
If it is intended to adjust the working depth whilst on-the-move to react to varying soil conditions or to repair harmful compaction, the optional fully hydraulic working depth adjustment is recommended. The working depth adjustment is carried out hydraulically via the support wheels and the rear roller as an option. Manual working depth adjustment via spindles is also available as an alternative.

It can be an advantage to allow the transport wheels to run in parallel on highly pressure-sensitive soils. The running gear thereby lightens the load on the rear roller. This is also not a problem for the Cenius-2TX.

In very wet conditions, in late autumn or when leaving the field to overwinter, the Cenius-2TX can be operated without a depth roller. In this special case, the running gear serves as the depth control. The tines at the rear of the wheels serve as wheel mark eradicators to ensure a level finish.

❗ "Due to the bolted clamps, the roller can quite easily be removed for wet conditions or for leaving a coarse 'autumn furrow!'"

(traction – working test
AMAZONE Cenius 5003-2TX Super · 3/2016)



Depth control via support wheels and the rear roller



Depth control via support wheels, running gear and the rear roller

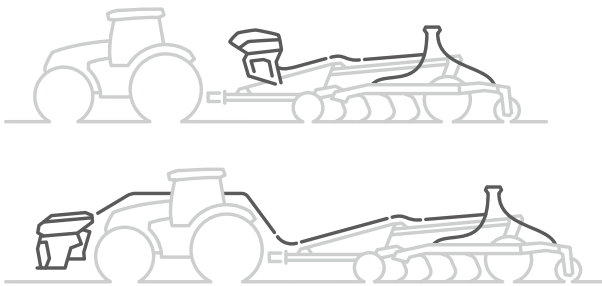


Depth control via support wheels and the running gear

❗ "Comfortable and practical is the hydraulic depth adjustment of the tines which Amazone offers as an option."
(profi Practice test "Trailed cultivators Part 2" · 06/2017)

Universal conveying systems – the choice is yours!

Combine the trailed soil tillage range with an optimum seeding system ...



Model	Hopper capacity (l)
Rear-mounted seeder box GreenDrill 501	500
Mounted front hopper FTender 1600	1,600
FTender 2200	2,200

Advantages of conveying systems with a segmented distributor head

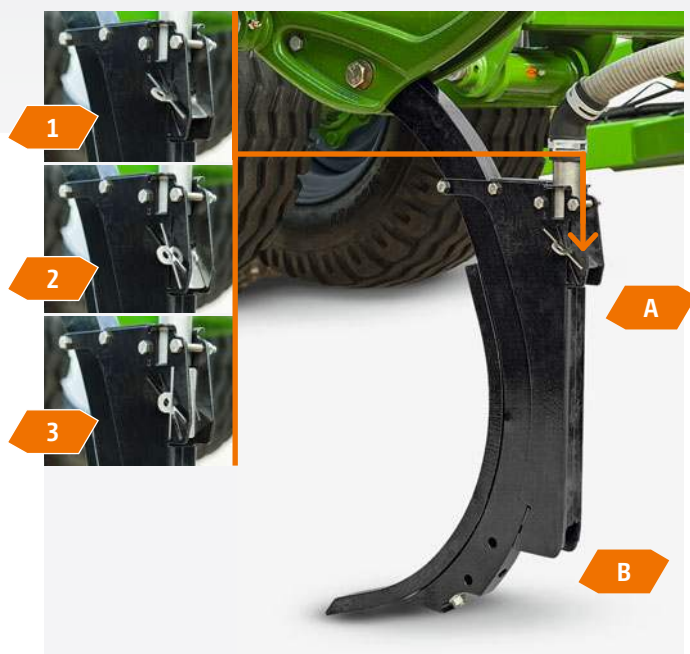
- ✔ Optimum lateral distribution across the entire working width
- ✔ Combination of the different sowing systems
- ✔ High application rates possible
- ✔ Variable with 12 to 48 outlets
- ✔ Part-area, site-specific sowing

... it makes no difference whether it's the GreenDrill or FTender

The universal conveying system enables the Cenius to be combined with various different sowing systems. The GreenDrill 501, with its 500 l hopper capacity, can be used in exactly the same way as the front or rear tanks with their respective capacities of 1,600 and 2,200 l. In addition to sowing catch crops, other seeds or even mineral fertilisers and micro-granules can be applied.



Fertiliser application tines with adjustable outlet for shallow or deep application



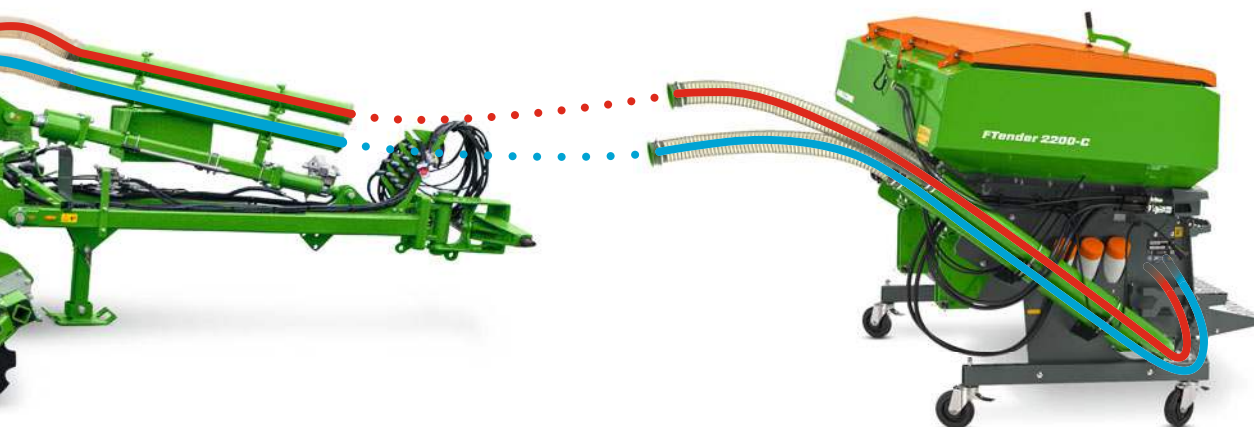
Fertiliser application tines with 40 mm wide C-Mix coulter for applying seed or fertiliser directly into the loosened soil, with outlet position setting 1) 100% on top of the soil with outlet A, with outlet setting 2) 50% on top of the soil with outlet A and 50% in the soil at the working depth with outlet B, 3) 100% in the soil at working depth with outlet B.

Seed baffle plates for broadcasting on the surface in front of the roller



Advantages of the fertiliser application tine

- ✔ By targeted placing of the fertiliser in the root area of the plants, the nutrients are available exactly where they are needed.
- ✔ High nutrient efficiency for better early plant development through faster and better availability.
- ✔ Reduction in fertiliser rates possible thanks to lower surface losses due to reduced breakdown or leaching.
- ✔ Reduction of passes by combining fertilisation and soil loosening for efficient, economical working.



GreenDrill

Rear-mounted seeder box for fine seeds and catch crops

With ISOBUS technology

Catch crop sowing and soil tillage in one pass

AMAZONE offers the GreenDrill 501 rear-mounted hopper, which has a hopper capacity of 500 l and can be safely accessed via steps, so that catch crops can be sown directly or during soil tillage.

The benefits

- ✔ Applying catch crops and fine seeds directly in combination with a soil tillage tool
- ✔ High application rates are also possible as a result of different metering rollers
- ✔ Even distribution via baffle plates
- ✔ Safe and convenient access via steps
- ✔ Precise metering with excellent lateral distribution
- ✔ Comfortable machine control via ISOBUS possible, thereby enabling part-area, site-specific processing of application maps



GreenDrill 501: With a hopper capacity of 500 l, for all trailed implements with hydraulic blower fan



GreenDrill 501 in use with the Ceus 5000-2TX Ultra

FTender

Mounted front hopper for high performance

FTender

AMAZONE offers a universal front-mounted hopper for versatile use in combination with seed drills and soil tillage equipment in the shape of the FTender with a capacity of 1,600 or 2,200 l.

Thanks to their complete ISOBUS integration, the hoppers can be operated via the ISOBUS operator terminal. The application rate can even be provided via an application map on a part-area, site-specific basis as well as being used in combination with GPS-Switch (SectionControl).



FTender 1600 front-mounted hopper with a capacity of 1,600 l in use with the Cenius 5003-2TX



Simple and easy operation of the GreenDrill 501 and FTender via the AmaTron 4 ISOBUS terminal



Easy exchange of the metering cassettes

Agronomical advantages of the Cenius mulch cultivators

Conservation soil tillage for mulch sowing



🏆 WINNER ON POINTS:

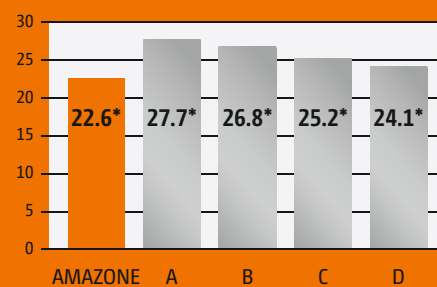
"The most easy to win and the most economical"

Out of 27 evaluation criteria: **9 times VERY GOOD, 14 times GOOD**

AMAZONE Cenius 5003-2TX Super achieved top results in the big comparison test published in profi magazine 5/2017 and 6/2017



The magazine "profi" tested semi-mounted cultivators in 4.6 to 5 m working widths in practical use. The test took place at working depths of 6 cm, 15 cm and 25 cm. As an average of these applications, the tractor in front of the Cenius featured the most favourable fuel consumption – around about 1.5 l less than the next best test contender. When stubble tilling at 6 cm depth, the Cenius equipped with duck foot shares consumed just 5 l/ha, which was the most economical cultivator on test.



* Average fuel consumption in l/ha

! "The Cenius almost always consistently comes out the best, especially for its power requirement and ease of adjustment."

(profi – comparison test: semi-mounted cultivators Part 2 · 6/2017)

Cenius

Model	Working width
Cenius 3003 Special/Super/Ultra	3.0 m
Cenius 3503 Super/Ultra	3.5 m
Cenius 4003 Super	4.0 m



The Cenius 3003 Super in work

The benefits of the Cenius:

- ✔ Ideal for small and medium-sized fields
- ✔ Universal application, from cultivating stubbles to basic soil preparation down to 35 cm
- ✔ Intensive loosening and crumbling thanks to the 11 tines on the Cenius 3003
- ✔ C-Mix Ultra tines with hydraulic overload protection for heavy and stony conditions
- ✔ Large frame height for maximum clearance



3 to 4 m



5 to 35 cm



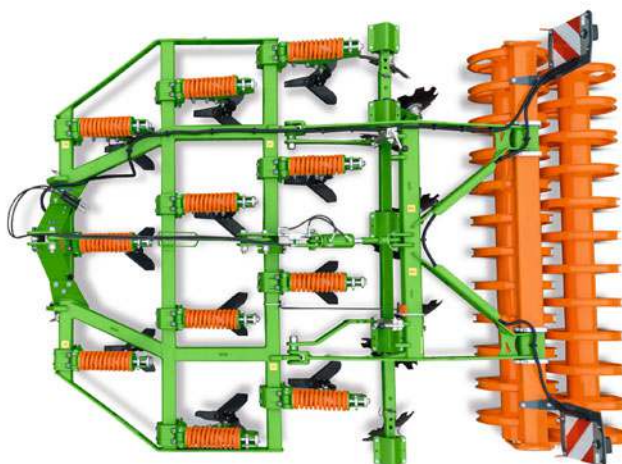
Up to 15 km/h



27 to 31 cm



Cenius 3003 Ultra with C-Mix Ultra tines
with hydraulic overload protection



Thanks to the bolt-on lower link pins, and the two mounting heights for the top link and lower links, mounting to the tractor in either Cat. 3 or Cat. 3N can be achieved.

Cenius-2TX

Model	Working width
Cenius 4003-2TX Super/Ultra	4.0 m
Cenius 5003-2TX Super/Ultra	5.0 m
Cenius 6003-2TX Super/Ultra	6.0 m
Cenius 7003-2TX Super/Ultra	7.0 m



Cenius 5003-2TX Super in the field

The benefits of the Cenius-2TX:

- ✔ Intensive loosening and crumbling thanks to a tine spacing of less than 30 cm
- ✔ Optional traction control for maximum traction
- ✔ Option of the Ultra overload protection for heavy and stony conditions
- ✔ Large frame height for maximum clearance





4 to 7 m



5 to 35 cm



Up to 15 km/h



28 to 30 cm



Cenius 5003-2TX Super with
C-Mix Super tines with
compression spring overload protection



The Cenius-2TX can be folded up in a matter of moments for quick field changes and road transport.

Optional equipment for the various models





Model		Cenius 3003		Cenius 6003-2TX	
		Cenius 3003 3503 4003		Cenius 2TX 4003-2TX 5003-2TX 6003-2TX 7003-2TX	
Linkage	Cat. 3	●		●	
	Cat. 3N	●		–	
	Cat. 4N	–		●	
	K80	–		●	
	Towing eye	–		●	
Tines	Special	●*		–	
	Super	●		●	
	Ultra	●**		●	
Transport	Rigid	●		–	
	Folding	–		●	

* only available for Cenius 3003

** only available for Cenius 3003 and Cenius 3503

The original is simply better

AMAZONE service and quality



Experience that pays off. That's why AMAZONE guarantees you the highest quality thanks to a very high level of vertical integration within its own factories in Europe - and it has been doing so for more than 140 years. The original is simply better.

In most cases, things need to happen very quickly, especially when there is a short time period for optimum soil tillage. That is why AMAZONE offers a first-class parts service with genuine parts that are precisely matched to your machine. So your machine is always ready for use - quality parts and available worldwide.

The parts centre in Tecklenburg-Leeden in Germany is the base for our worldwide parts logistics system. This ensures the optimum availability of parts, even for older machines. Whenever you need us, the AMAZONE service team is there for you, supported by a network of competent and highly trained sales partners and service technicians.

AMAZONE also offers an intensive introduction to the operation and handling of your new machine on your farm by a trained member of the AMAZONE team. Alternatively, you can use "SmartLearning" - AMAZONE's interactive driver training - to familiarise yourself with the machine's operation before using it for the first time.

Effective soil tillage from the very first metre.

The advantages of original spare parts and wearing metal:

- ✔ Quality, reliability and performance
- ✔ Immediate availability, even for older machines
- ✔ Higher resale value of your used machine



myAMAZONE

for more performance



Register now

www.amazone.net/myamazone



WARRANTY

» Register now and apply for a 24 month manufacturer guarantee!

- ✔ Extend the protection offered for your machine with a 24 month manufacturer guarantee.
- » The extended guarantee can be applied for within the contractual warranty period of 12 months after initial installation.

NEW



PARTS

» Parts - find the right parts for your machine even more easily now!

- ✔ The right parts list for your machine with just one click.
- ✔ Identify the correct part in the exploded views in no time at all.
- ✔ Create a shopping basket and send it to your service partner.



ADJUSTMENT
AND OPERATION

» Now enter the machine number and see at a glance all the relevant information to help get the maximum performance from your machine

- ✔ Season start and commissioning
- ✔ Adjustment and operation
- ✔ Parts lists and operating instructions
- ✔ Maintenance and storage

Technical data:

Cenius and Cenius-2TX

Cenius mounted cultivator		Cenius 3003 Special/Super/Ultra	Cenius 3503 Super/Ultra	Cenius 4003 Super
Working width (m)		3.00	3.50	4.00
Transport width (m)		3.00	3.50	4.00
Tine spacing (mm)		273	292	308
Number of tines		11	12	13
Number of tine rows		3		
Maximum working depth (mm)		350		
Overload safety protection for the tines	Special	Shear bolt	–	–
	Super	Compression spring		
	Ultra	Hydraulic		–
Levelling unit – Concave disc diameter (mm) – Alternative spring steel closers		460		
Operational speed (km/h)		10 – 15		
Overall length (m)		3.80 (4.25 with tandem roller)		
Linkage category		Category 3 and 3N		
Centre of gravity distance (d) at the heaviest specification (m)		2.05		

Cenius-2TX trailed cultivator	Cenius 4003-2TX Super/Ultra	Cenius 5003-2TX Super/Ultra	Cenius 6003-2TX Super/Ultra	Cenius 7003-2TX Super/Ultra
Working width (m)	4.00	5.00	6.00	7.00
Transport width (m)	3.00			
Transport length (m) (depending on rear roller)	9.30–10.10			
Transport height (m)	2.80	3.20	3.70	4.0
Tine spacing (mm)	308	294	286	280
Number of tines	13	17	21	25
Number of tine rows	4			
Tine spacing in the row (mm)	123	117	114	112
Maximum working depth (mm)	350			
Levelling unit – Concave disc diameter (mm) – Alternative spring steel closers	460			
Operational speed (km/h)	8 – 15			
Linkage category	Category 3 and 4N Alternatively: Ball point coupling, towing eye			

Illustrations, content and technical data are not binding and may differ depending on the level of equipment. Country-specific road traffic regulations apply and must be complied with, meaning that special approval may be required. The permissible axle loads and total weights of the tractor should be checked. Not all the listed combination options are possible with all tractor manufacturers.

Technical data:

FTender mounted front hopper

FTender mounted front hopper	FTender 1600	FTender 1600 with front tyre packer	FTender 2200	FTender 2200 with front tyre packer	FTender 2200-C
Hopper capacity (l)	1,600		2,200		
No. of metering units	1				2
No. of spool valves required	1 single-acting (front) with pressure-free return				
Oil flow from (l/min)	28				
Tractor mounting	3-point linkage mounted Cat. 3/4N				
Permissible total weight (kg)	3,421	3,421	4,118	4,118	4,203
Overall width (mm)	2,504	2,504	2,504	2,504	
Filling height (mm)	1,402	1,581*/1,737	1,582	1,762*/1,917	
Overall length (mm)	1,698	2,093	1,698	2,093	
Unladen weight (kg)	526	1,111	661	1,246	783

*Packer in transport/working position

Illustrations, content and technical data are not binding and may differ depending on the level of equipment. Country-specific road traffic regulations apply and must be complied with, meaning that special approval may be required. The permissible axle loads and total weights of the tractor should be checked. Not all the listed combination options are possible with all tractor manufacturers.





AMAZONE



Illustrations, content and technical data are not binding and may differ depending on the level of equipment. Country-specific road traffic regulations apply and must be complied with, meaning that special approval may be required. The permissible axle loads and total weights of the tractor should be checked. Not all the listed combination options are possible with all tractor manufacturers.



AMAZONEN-WERKE H. DREYER SE & Co. KG

P. O. Box 51 · 49202 Hasbergen-Gaste/Germany

Phone +49 (0)5405 501-0 · Fax +49 (0)5405 501-193